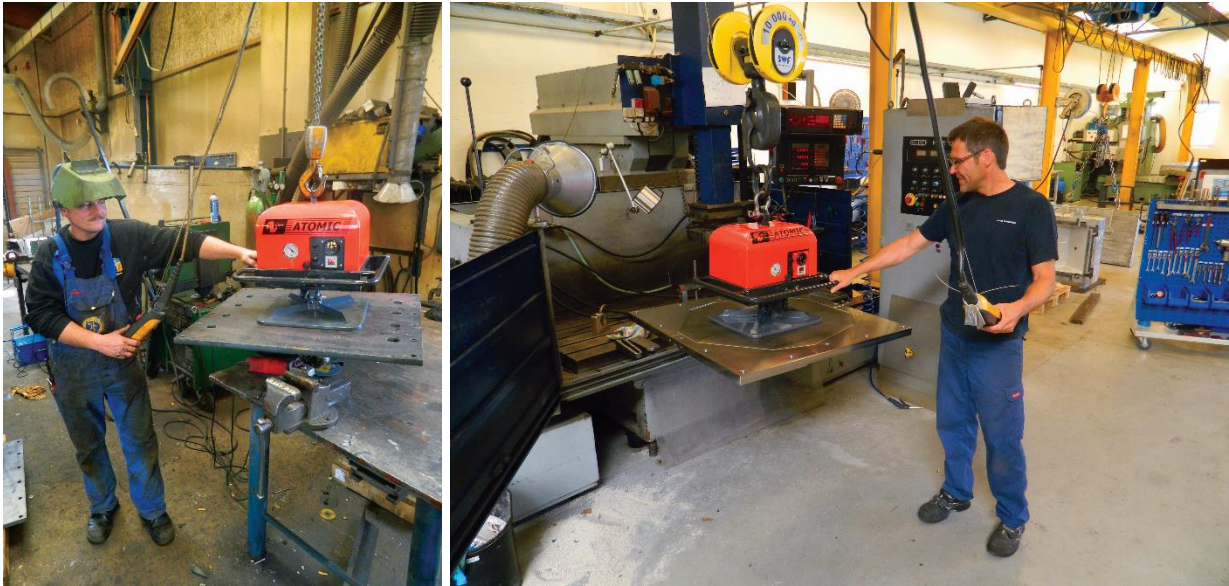


AL-ATOMIC 500 battery powered vacuum lifter – standard unit!



AL-ATOMIC 500 battery powered vacuum lifter for handling of metal- steel, inox, plastic, table sheets etc

Easy to use.

- Attach to chain hoist hook
- Start battery powered vacuum pump on the control panel
- Use slide valve to activate vacuum
- Once adequate pressure can be seen / acoustic buzzer stops – you can lift the load

A quick coupler allows you to change the suction pad in minutes, for bigger or smaller sized loads. An assortment of standard suction pads can be offered on request.

AL-ATOMIC 500 has a safety system with a Manometer, an acoustic warner and is powered by the on board battery, that can be recharged with the 220V-> 12V battery charger included.

Suction pads are not incl. in the basic machine price!

Main Body – robust and compact for usage in industrial sites

- Lifting capacity (SWL): 500 kg (depends on suction pad used).
- Battery: 12 V/26 Ah
- Vacuum pump capacity = 3,3 m3/hour
- Surrounding temperature: +10 C - +40 C
- Manual operated slide valve for vacuum on/off
- Dimensions LxWxH : 500 x 400 x 400 mm
- Lifting eye excl. bush: Ø35 mm
- Max vacuum: -780 mbar
- Weight: 34 kg excl. suction pad

Additional extras:

- Handle for extra distance
- Various suction pads
- AL-Spider lifting yokes with adjustable suction pads with shut of valves.
- Remotely controlled suction/release of load